

## Upcoming Events:

**Tribal Plan and Project Review (TPPR) meetings**  
every 3rd Tuesdays of each month

**Tribal Earth Week**  
April 23-28, 2018

**Trash bags available for Community Cleanups at our office**  
Mondays-Fridays 8am to 5pm



With the many technical problems the Tribal Solid Waste Department faces on a weekly basis, one factor includes the high cost to transport solid waste from Cibecue to the Tribal Landfill. Another factor includes the many illegal dumpsites popping up within Cibecue because of limited services. In order to provide good and safe services to the community members of Cibecue, the Environmental Protection Office took the initiative to seek for funding to help address the solid waste issues in Cibecue and EPO was awarded grant funding to conduct a feasibility study for a transfer station in the community of Cibecue.

A **transfer station** is a building or processing site for the temporary deposition of solid waste. Transfer stations are often used as places where local waste collection vehicles will deposit their waste cargo prior to loading into larger vehicles. These larger vehicles will transport the waste to the end point of disposal at the Tribal Landfill. The feasibility study will begin in February 2018. The feasibility study will assist the Tribe in seeking funding for an actual construction of a transfer station for Cibecue.

If you have any questions on this feasibility study, you can contact Brenda Begay at EPO at 338-4325.

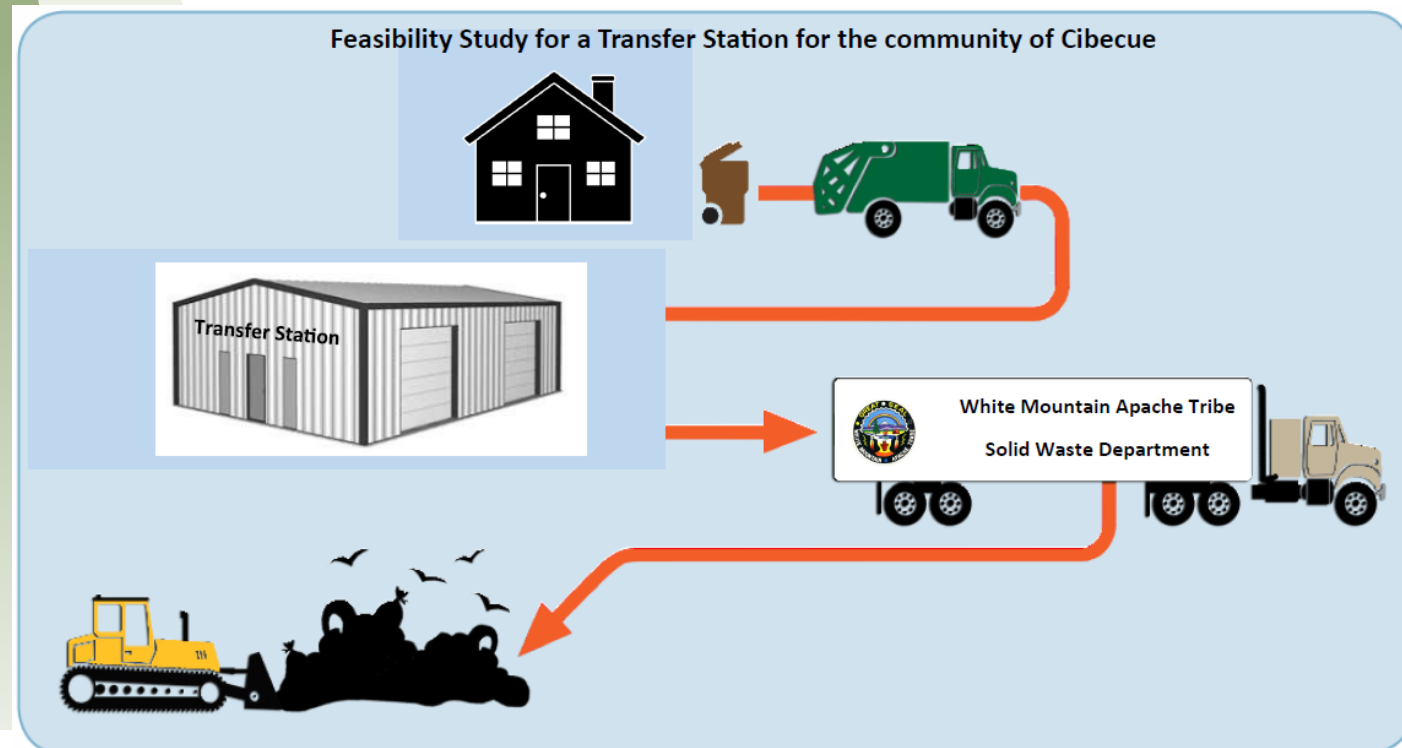
EPO staff at their biweekly radio show at KNNB. **"Environmental Hour"** is every other Mondays at 9:00am to 10:00 am.

**Public Works Department**  
(928) 338-1504

**Tribal Landfill hours**—Mondays through Thursdays from 7:00 am to 4:00 pm. CLOSED on Fridays. Be sure to tie down your load.

**Stago Pit** accepts all green waste and construction waste. Do not take your trash to the site.

Residential weekly services available. Call PW for more information.



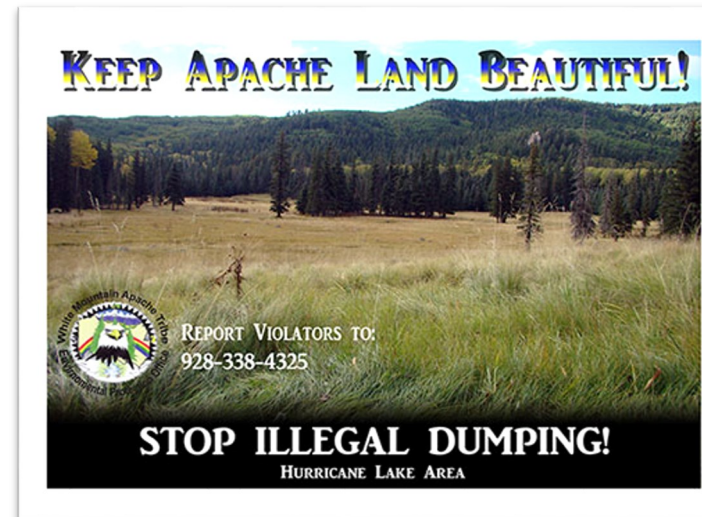
Issue  
05  
1st Quarter—FY18

# The Green Times....

QUARTERLY WMAT ENVIRONMENTAL NEWSLETTER



**ENVIRONMENTAL PROTECTION OFFICE**  
PO BOX 816  
FORT APACHE, AZ. 85926  
(928) 338-4325  
WWW.WMAT.US/EPO



## This Issue

Tribal Landfill events	P. 1
Recycling Program	P. 2
Air Quality & Brownfields—	P. 3
Feasibility Study for Cibecue	P. 4

### EPO staff:

Brenda Pusher-Begay,  
Environmental Manager  
  
Delbert Altaha, Jr., Air  
Quality Specialist  
  
Terry Hill, Environmental  
Specialist I  
  
Marco Burnette,  
Environmental Assistant

### EPO Programs

- ⇒ Environmental Policy Program
- ⇒ Air Quality Program
- ⇒ Solid Waste Regulatory Program
- ⇒ Underground Storage Tanks Regulatory Program
- ⇒ Brownfields—Tribal Response Program
- ⇒ CARP Program

## "1-week FREE Landfill OPEN to the public" events

Yes, you read it right! The Tribal Landfill will be open to the public for **FREE** for 1-week in February, April, and July. NOW is the time for you to gather up the junk that are laying in and around your house.

These are the only dates designated for such events so don't call our office or Public Works asking everyone if the landfill is free AFTER these events happened already. These events are paid through a grant that EPO received to help combat Rocky Mountain Spotted Fever so remember, **only these three free events will happen this year!!** Take advantage of this great opportunity.

Write these dates down NOW in your calendars at home and at work, in your monthly planners, on the calendar app on your cell phone, anywhere to remind you of these dates!!!

**Monday, February 19 (Tribal Holiday) through Friday, February 23.**

**Monday, April 23 through Saturday, April 28 - TRIBAL EARTH WEEK.**

**Monday, July 9 through Friday, July 13.**

In order to participate in these free events, you will need to do the following:

- Pick up a FREE LANDFILL PASS at Public Works or EPO
- You are required to fill out a short survey when you pick up your landfill pass.
- Take your items to the landfill, be sure to tie down your items!
- At Landfill entrance, give your landfill pass to an EPO staff member and **you will receive an incentive for your effort in making our Apache lands beautiful and keeping everyone safe from Rocky Mountain Spotted Fever!**

Any questions, call EPO at 338-4325.



# Environmental Outreach and Activities

## Recycling Program:

### GLASS RECYCLING STUDY



#### Mark your calendars....

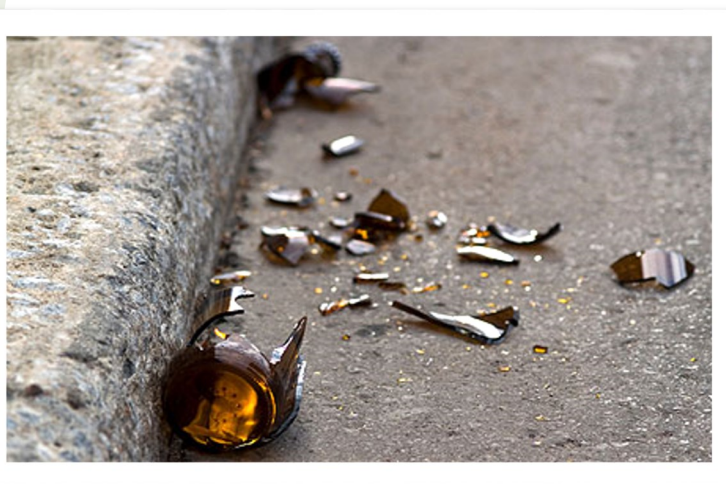
So starting in 2018, EPO will coordinate three “Glass Collection Events” - during the week of February 19-23; during the Tribal Earth Week in April 23-27; and July 9-13.

**Drop-off locations for glass collection events** will be behind EPO building in Fort Apache (2-story white building across TRS school), Recycling Center at Public Works yard, and at Landfill entrance.

#### What should you do before the collection events?

SAVE YOUR GLASS WASTE IN A CARDBOARD BOX AT HOME AND WORK. During the collection events, you can drop off your cardboard filled with glass at these locations.

**Try not to break the glass waste as broken glass are unsafe!**



#### What do you do with your food & drink glass containers?

Like many of us, you probably throw your glass containers in the trash. There are no glass recycling facility nearby so it is hard to recycle glass. Some people take their glass products to Phoenix or Tucson where it can be recycled but for many, recycling glass is impossible.

The Tribal EPO received funding to conduct a “Glass Recycling Study” on the Fort Apache Indian Reservation. Many of the glass waste on the reservation ends up in the trash can and at the Landfill or people tend to break these glass on the ground.

**Have you ever seen broken glass at your favorite swimming spot?** An EPO staff remembers getting cut by broken glass at a very young age while swimming in the river. This staff member received over 20 stitches! We hear too many stories of such incidents therefore, EPO decided to start a pilot project for glass recycling.

But with the funding EPO received from U.S. EPA, it was recommended for the Tribe to conduct a glass study first to see how much glass waste are out there on the reservation. If the numbers are feasible, U.S. EPA will purchase a glass crusher for the program in the future.



#### What can I recycle?

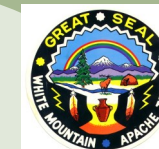
ANY GLASS CONTAINERS — glass food and drink containers. Clean out your glass containers. **All glass colors are accepted.**

**NO CERAMICS or MIRRORS**

So help EPO with the GLASS RECYCLING STUDY so they can purchase a glass crusher!

Any questions, call Brenda at EPO at 338-4325.

# Air Quality News—Indoor Air Quality



## MOLD ISSUES

A water leak in or under a sink or a leaking roof can create major mold problems in tribal homes. Exposure to damp and moldy environment may cause a variety of health effects or none at all.

Some people are sensitive to molds. For these people, molds can cause nasal stuffiness, throat irritation, coughing or wheezing, eye irritation, or in some cases, skin irritation. People with mold allergies may have more severe reactions. Immune-compromised people and people with chronic lung illnesses, such as obstructive lung disease, may get serious infections in their lungs when they are exposed to mold.

Remember, health and safety are top priority for our families. **The most important step is to identify and fix the moisture problem before it gets too costly, and address the problem head on to prevent health issues.**

Any questions on indoor air quality, contact Delbert Altaha, Jr at 338-4325.

**To get rid of the mold**, use hot water with soap and bleach to remove most of the mold. ...

- 1) Mix a solution of 1 part bleach to 2 parts water. ...
- 2) Spray the area with the bleach solution and allow it to dry.
- 3) Spray a second time and scrub with a brush.
- 4) Rinse and repeat as necessary until the mold is gone, then rinse it off and let dry.

**Wear a mask and gloves when cleaning mold.**



#### How to PREVENT MOLD in your bathroom

- First, after a bath or a shower, squeegee water off the shower walls. ...
- Second, run your bath fans during your bath or shower and for a half hour after to flush out moisture and open your bathroom window.
- Third, if you have tile, seal the grout lines annually with a standard grout sealer to waterproof them.

## Tribal Response Program—Brownfields

#### What is a Brownfield Site?

A **Brownfields site** is a property that has hazardous substance, pollutant, or contaminant such as asbestos, lead, petroleum, and others. These sites need to go into an Brownfields inventory kept by EPO and is continuously updated. For a property to be identified as a Brownfields cleanup site, there must be a plan to redevelop the property. The plan can be anything from parking space, garden, park, etc.

A lot of time and finance goes into the redevelopment of a property, however in some cases, not so much. For example, the old Maintenance building located beside the Head Start. EPO did a Phase I Assessment on the site. This is where a certified contractor inspects the site and identify possible contaminates.



The Maintenance building was suspected for lead and asbestos and it was confirmed with a Phase II Assessment. Phase II Assessment is when the contractor samples the flooring tiles, ceiling panels, etc. and sends to a certified laboratory. The building was demolished and is now a parking space for the Head Start Program.

**If you know if any potential Brownfields sites, please call Marco Burnette at 338-4325.**